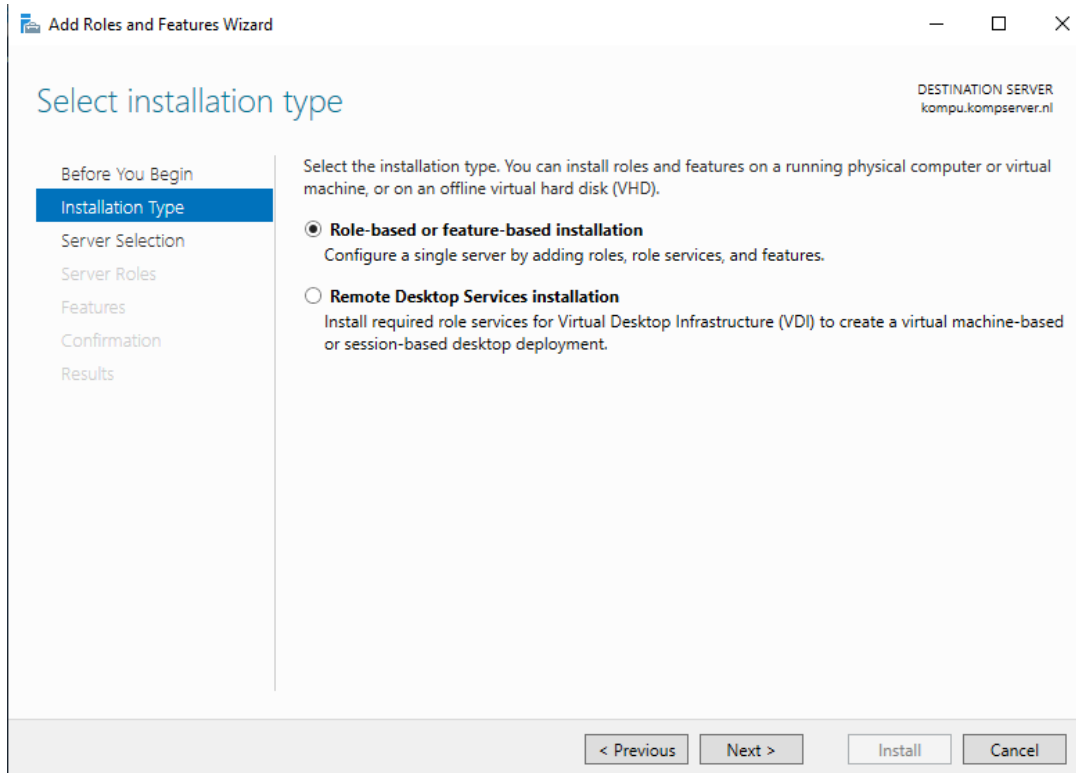
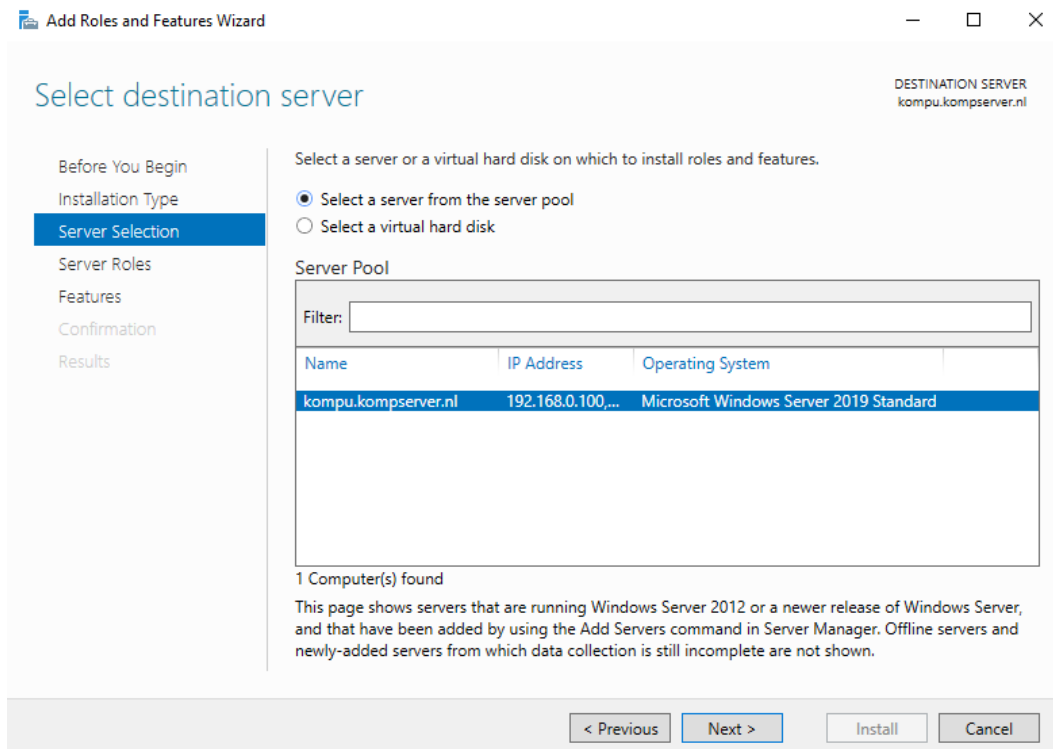


Install via Windows Deployment Service (WDS)

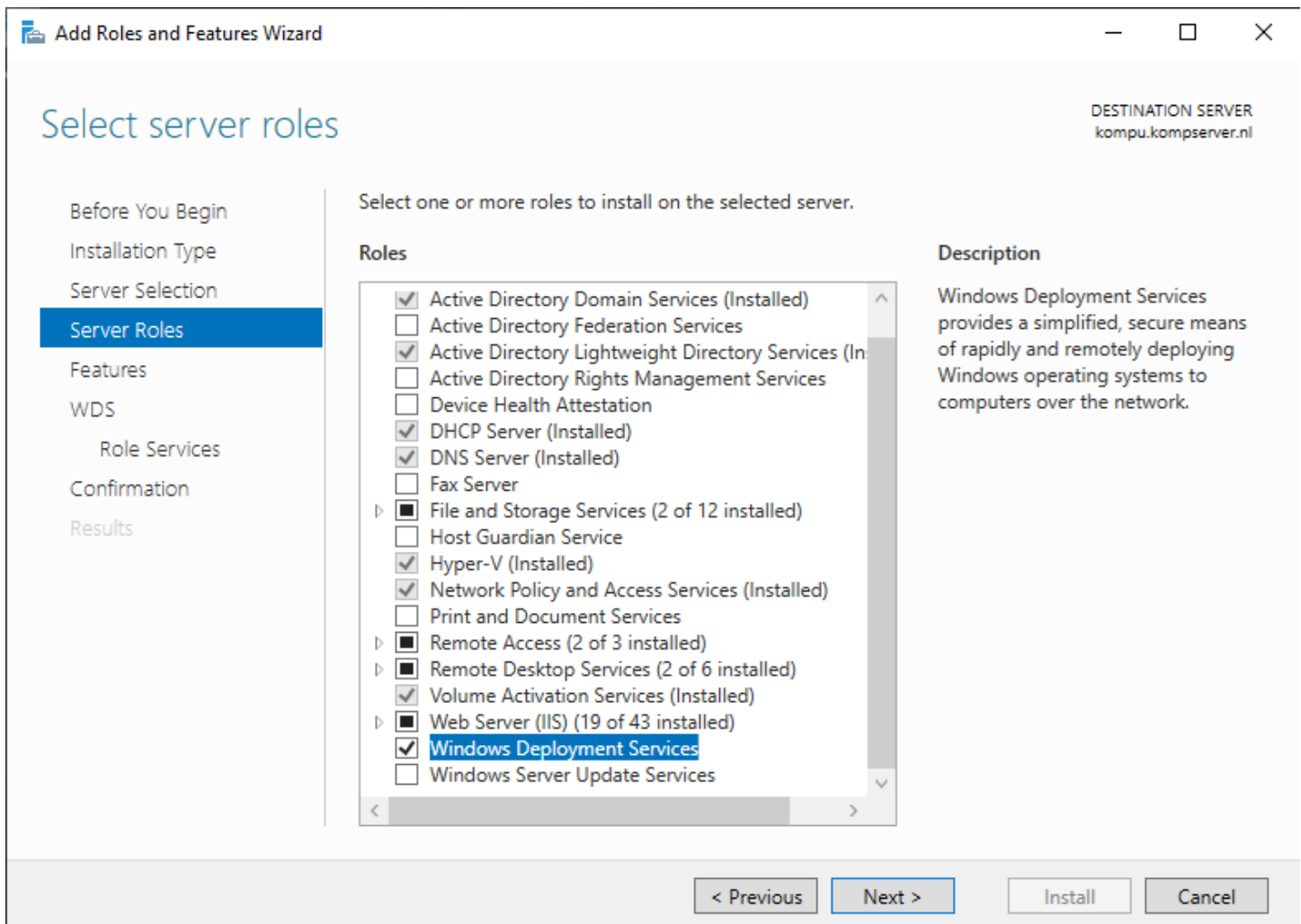
1. Add roles and features



2. Role-Based or feature-based installation



3. Select kompserver



Select Windows Deployment Services

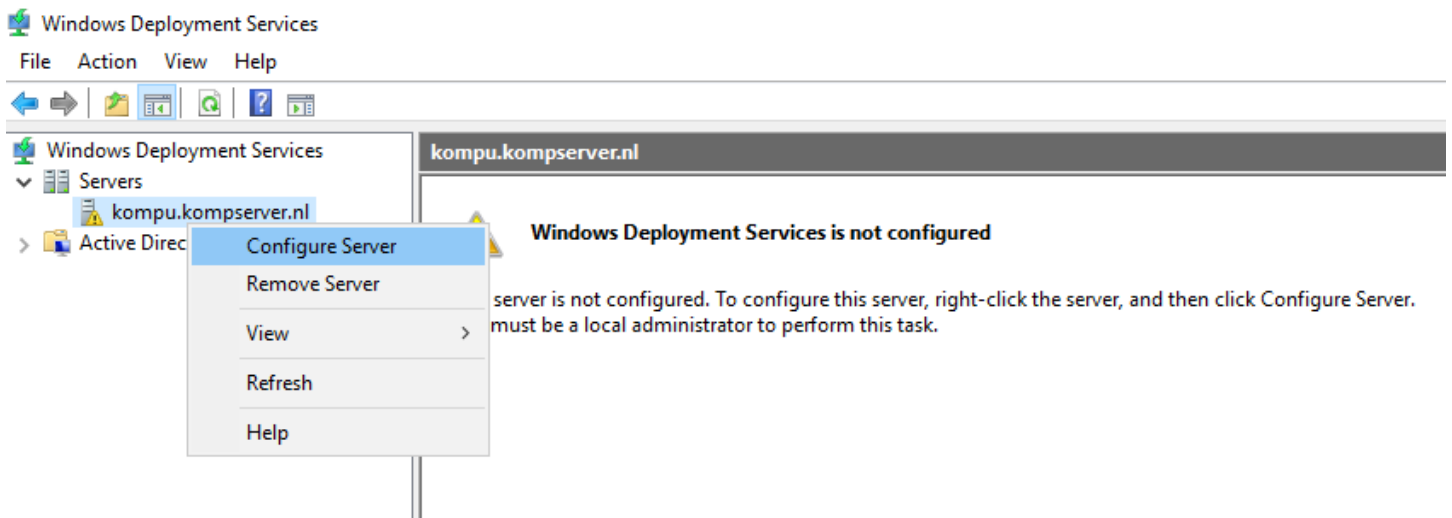
-Features= Next

-WDS = Next

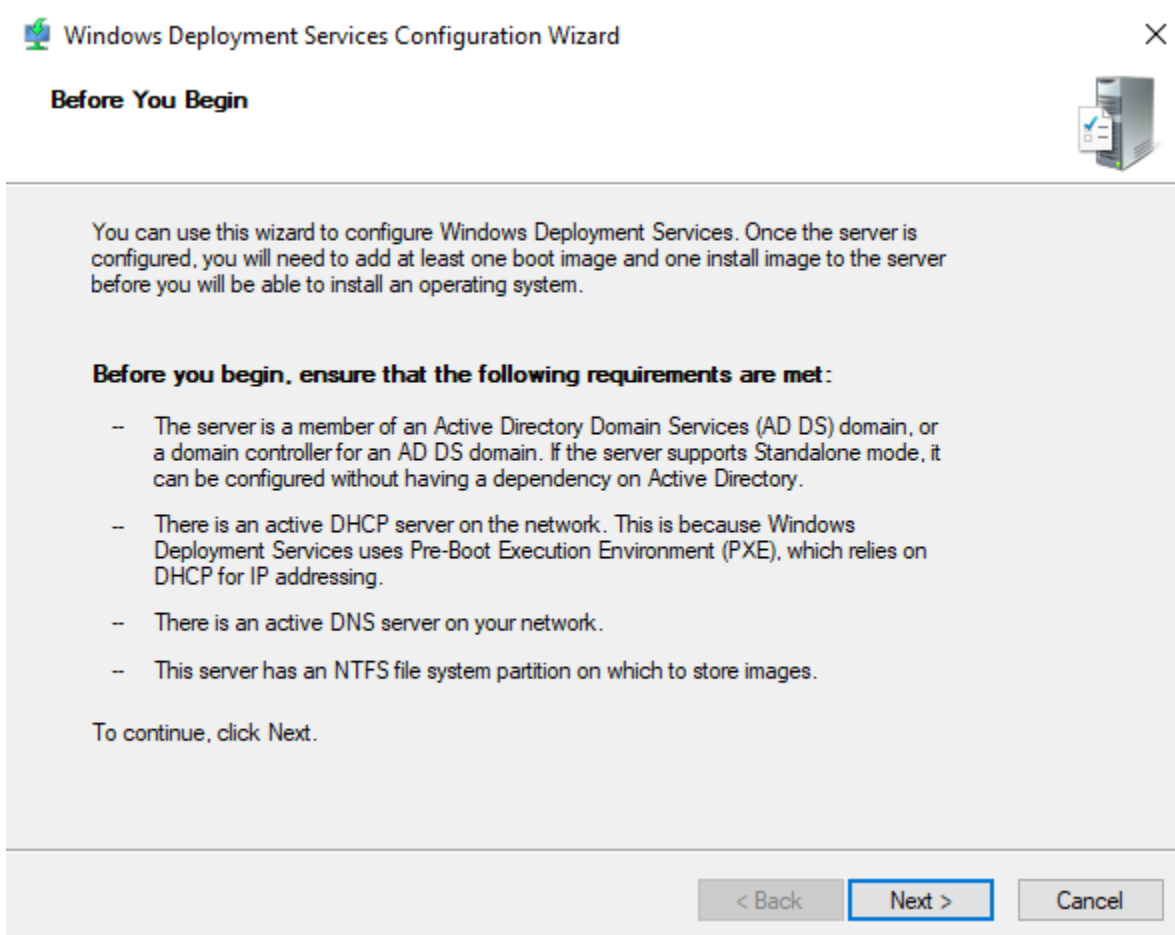
-Role Services = Next

-Confirmation = Install

-Tools > Windows Deployment Services



Right mouse button on server > Configure Server



>next



Install Options



Select one of the following options:

Integrated with Active Directory

This server is a member of an Active Directory Domain Services (AD DS) domain, or a domain controller for an AD DS domain.

Standalone server

Configure the server so that it is standalone, operating independently of Active Directory.

< Back

Next >

Cancel

If needed ,select 'intergrated with Active Directory'
>next



Remote Installation Folder Location



The remote installation folder will contain boot images, install images, PXE boot files, and the Windows Deployment Services management tools. Choose a partition that is large enough to hold all of the images that you will have. This partition must be an NTFS partition and should not be the system partition.

Enter the path to the remote installation folder.

Path:

Make sure the Remote installation path is on a separate drive
>next



Proxy DHCP Server



If Dynamic Host Configuration Protocol (DHCP) is running on this server, check both of the following check boxes and use DHCP tools to add appropriate PXE options to all DHCP and DHCPv6 scopes.

If a non-Microsoft DHCP server is running on this server, then check the first box and manually configure DHCP option 60 and DHCPv6 Vendor Class for Proxy DHCP.

The Windows Deployment Services Configuration Wizard detected Microsoft DHCP service running on the server. Please select from the following options:

- Do not listen on DHCP and DHCPv6 ports
- Configure DHCP options for Proxy DHCP

< Back

Next >

Cancel

As above
>next

PXE Server Initial Settings

You can use these settings to define which client computers this server will respond to. Known clients are the clients that have been prestaged. When the physical computer performs a PXE boot, the operating system will be installed based on the settings that you have defined.

Select one of the following options:

- Do not respond to any client computers
- Respond only to known client computers
- Respond to all client computers (known and unknown)

- Require administrator approval for unknown computers. When you select this option, you must approve the computers using the Pending Devices node in the snap-in. Approved computers will be added to the list of prestaged clients.

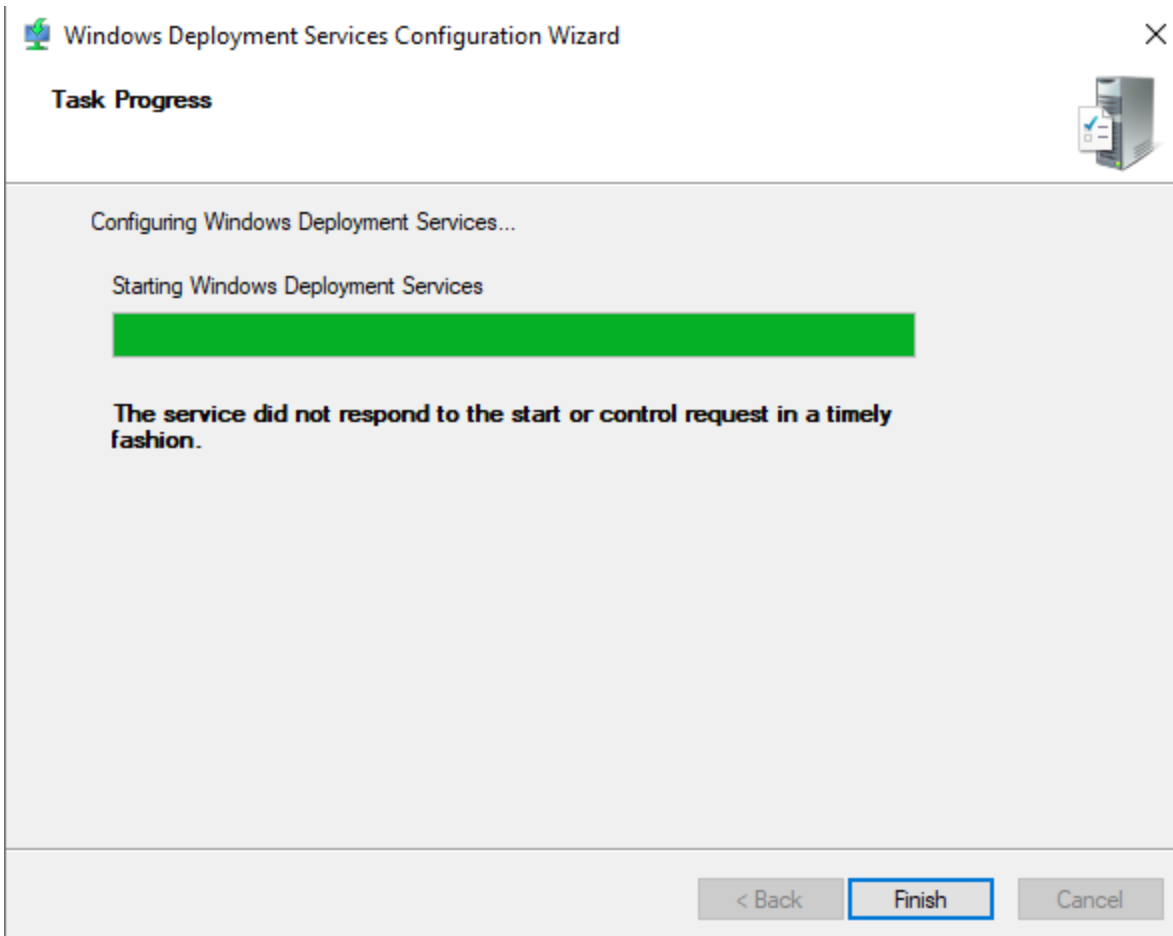
To configure this server, click Next.

< Back

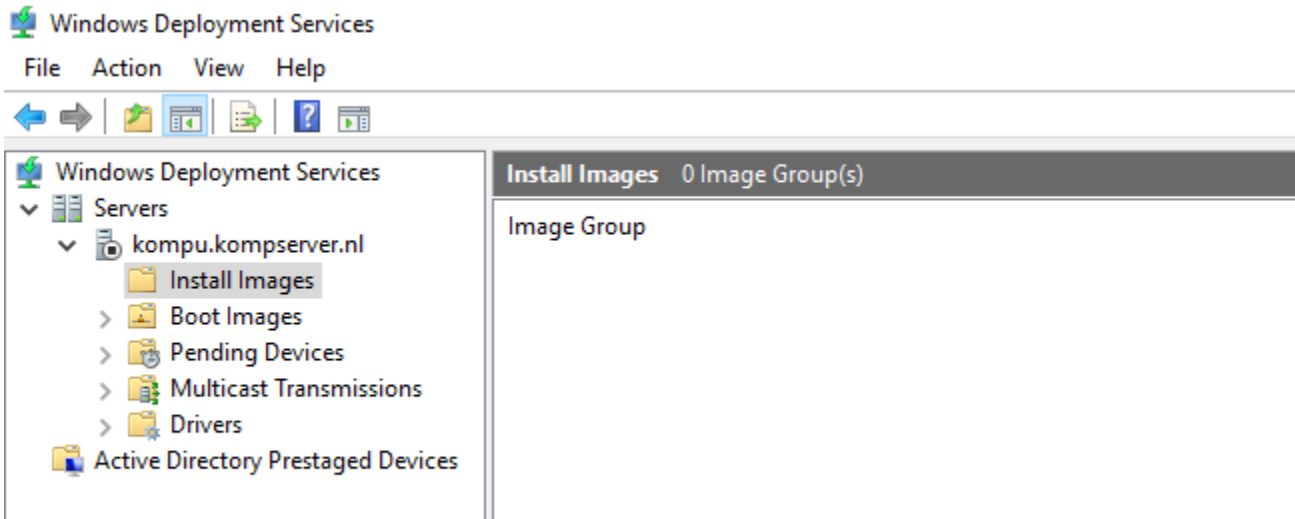
Next >

Cancel

Select 'Respond to all client computers (known and unknown)' and 'Require administrator approval' >next



If have the 'The share name is already in use on this server' error then use the following command line in windows powershell: net share REMINST /delete
>finish



- server > install images

Right mouse button on: install images > add install image

Image Group



This wizard adds an install image to your server. You must have at least one install image and one boot image on your server in order to boot a client using Pre-Boot Execution Environment (PXE) and install an operating system.

An image group is a collection of images that share common file resources and security. Enter the image group for the install image that you want to add.

Select an existing image group

Create an image group named

< Back

Next >

Cancel

Change the name if necessary

>next

Image File



Enter the location of the Windows image file that contains the images to add.

File location:

Browse...

Note: The default boot and install images (Boot.wim and Install.wim) are located on the installation DVD in the \Sources folder.

[More information about images and image types](#)

< Back

Next >

Cancel

>browse

This PC > Software (E:) > Server_2019_std > SW_DVD9_Win_Server_STD_CORE_2019_1809.10_64Bit_English_DC_STD_MLF_X22-47318 > sources >

Name	Date modified	Type	Size
dlmanifests	12/4/2020 12:18 AM	File folder	
en-us	12/4/2020 12:18 AM	File folder	
etwproviders	12/4/2020 12:18 AM	File folder	
inf	12/4/2020 12:18 AM	File folder	
migration	12/4/2020 12:18 AM	File folder	
replacementmanifests	12/4/2020 12:18 AM	File folder	
sxs	12/4/2020 12:18 AM	File folder	
vista	12/4/2020 12:18 AM	File folder	
xp	12/4/2020 12:18 AM	File folder	
boot.wim	12/4/2020 12:15 AM	WIM File	589,656 KB
install.wim	12/4/2020 12:17 AM	WIM File	4,460,716 KB

Unpack ISO file > go to unpacked folder/sources

Select install.wim

Available Images



The file that you specified contains the following images. Select the images that you want to add to the server.

Name	Architecture	Description
<input checked="" type="checkbox"/> Windows Server 2019 SERVER...	x64	Windows Server 2019 SERVEF
<input checked="" type="checkbox"/> Windows Server 2019 SERVER...	x64	Windows Server 2019 SERVEF
<input checked="" type="checkbox"/> Windows Server 2019 SERVER...	x64	Windows Server 2019 SERVEF
<input checked="" type="checkbox"/> Windows Server 2019 SERVER...	x64	Windows Server 2019 SERVEF

Use the default name and description for each of the selected images

< Back Next > Cancel

Deselect the images you don't want in the image group

>next

Summary



You have selected the following images

Image group: ImageGroup1
 Image file: E:\Server_2019_std\SW_DVD9_Win_Server_STD_CORE_20

Selected images:

Name
Windows Server 2019 SERVERSTANDARDCORE
Windows Server 2019 SERVERSTANDARD
Windows Server 2019 SERVERDATACENTERCORE
Windows Server 2019 SERVERDATACENTER

To change your selection, click Back. To add the selected images to the server, click Next.

< Back Next > Cancel

>next

Add Image Wizard



Task Progress



The operation is complete



The selected images were successfully added to the server.

< Back

Finish

Cancel

>finish

Windows Deployment Services

File Action View Help



- Windows Deployment Services
 - Servers
 - kompserver.nl
 - Install Images
 - ImageGroup1
 - Boot Images
 - Pending Images
 - Multicast Images
 - Drivers

Boot Images 0 Boot Image(s)

Image Name

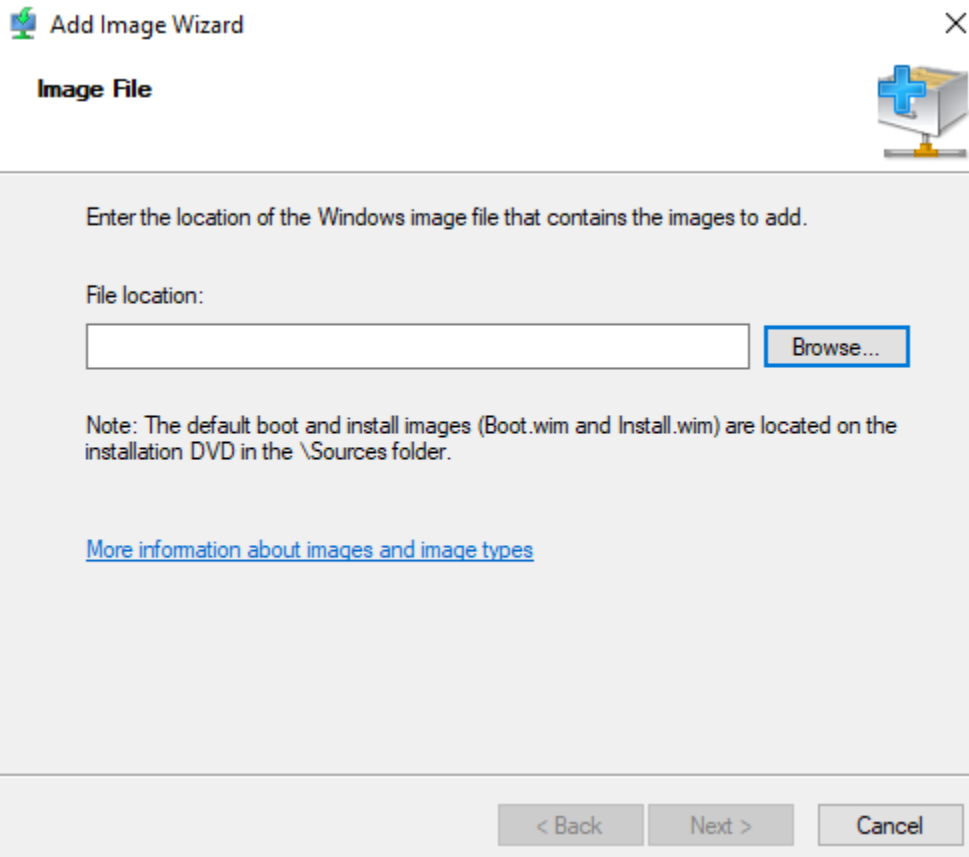
Add Boot Image...

View

Export List...

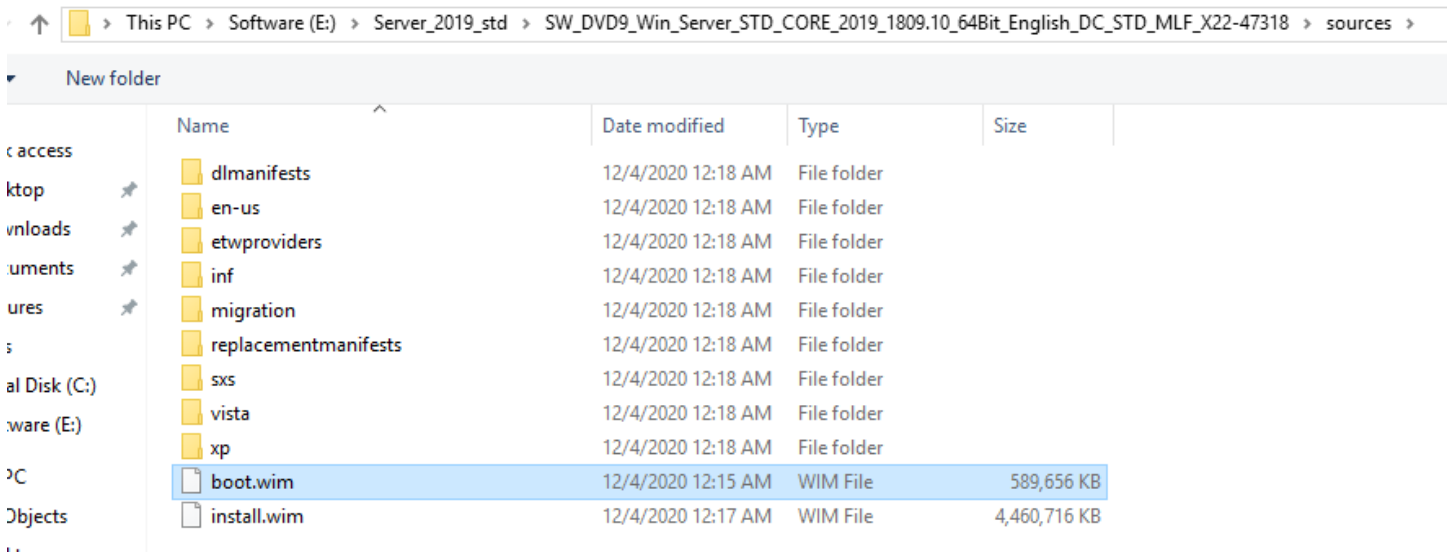
Help

Server/Boot images > Right mouse button on: 'Boot Images'



>browse

new image file



In the same folder as the install.wim select the boot.wim

Image Metadata



Enter a name and description for the following image:

'Microsoft Windows Setup (x64)'

Image name:

Microsoft Windows Setup (x64)

Image description:

Microsoft Windows Setup (x64)

Image architecture:

x64

< Back

Next >

Cancel

Change the name if necessary

>next

Summary



You have selected the following images

Image group: Boot Images

Image file: E:\Server_2019_std\SW_DVD9_Win_Server_STD_CORE_20

Selected images:

Name

Microsoft Windows Setup (x64)

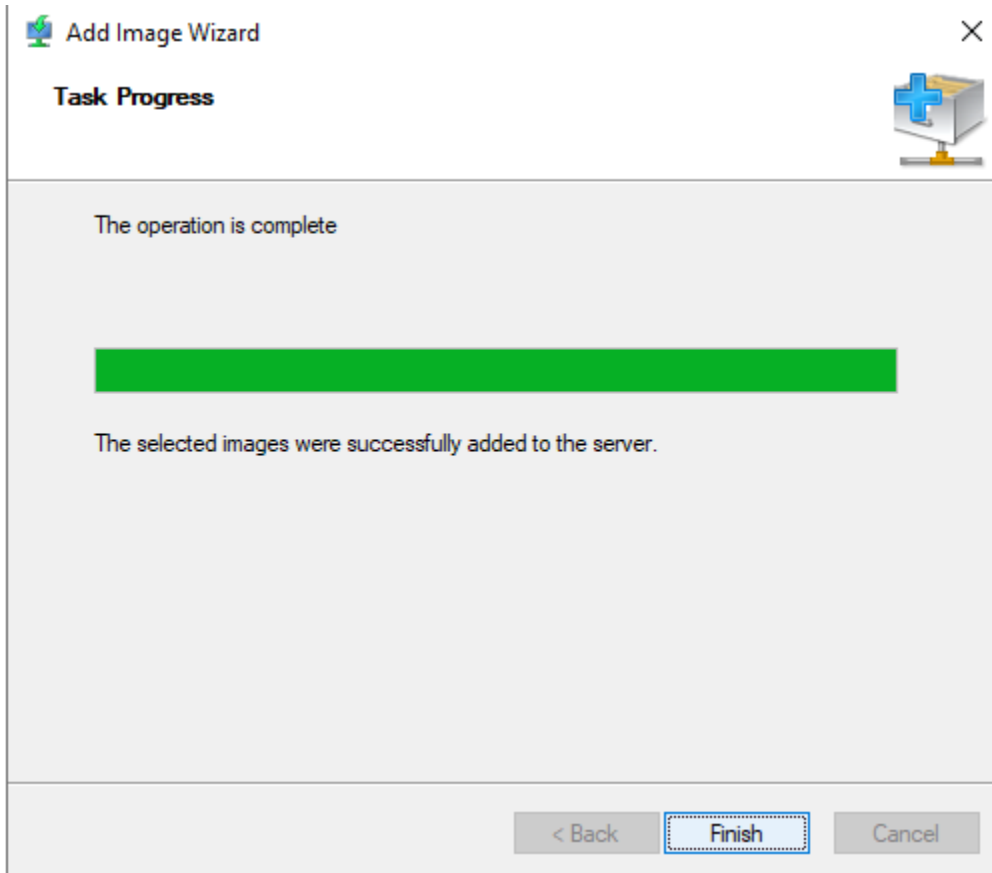
To change your selection, click Back. To add the selected images to the server, click Next.

< Back

Next >

Cancel

>next



>finish

Now you could install these images on a separate PC, which requires a working domain controller with DHCP and Routing.

On the client itself use as plex* login: administrator@(domain name) and the password of this admin.

*The computers/server used is a Dell opti**plex**